



LAID-BACK *luxury*

A GLORIOUSLY OPEN HOME WITH PLENTY OF NOOKS TO ESCAPE
TO WORKS BEAUTIFULLY FOR THIS SYDNEY FAMILY-OF-FIVE
STORY & STYLING LISA HILTON PHOTOGRAPHY BRIGID ARNOTT



AN ENTERTAINER'S DELIGHT
In Michelle and Greg's Sydney home, large sliding doors from the living areas expand out to the stunning outdoor entertaining area. Eating alfresco is a breeze for the couple (pictured with their daughter, Teagan, 17, and son, Ashton, eight) thanks to an undercover pavilion, designed by architect Megan McGlinchey, and 'Tribu' outdoor furniture from Cosh Living. 'Tribu' sunloungers, also from Cosh Living, add resort style appeal to the swimming pool area. >



“WHAT I love
most ABOUT
OUR KITCHEN
IS THE simple
layout” ~ MICHELLE



KITCHEN

The monochromatic palette of the kitchen (above & top) is warmed by sandstone and timber veneer accents. “This is definitely the hub of our home, it’s a place to relax and entertain,” says Michelle. Built and installed by Timberline Joinery, the space features white cabinetry topped with Caesarstone benchtops in Raven, which contrasts beautifully with the richness of True Grain

timber veneer cupboards in Casuarina. On the back wall, colour-backed glass, painted in Dulux Vivid White, forms the kitchen splashback, while sandstone tiles connect the kitchen with the rest of the interiors. A pair of chic high-gloss Lightyears ‘Caravaggio’ pendants provide task lighting. Enea ‘Lottus Wood’ stools from Ke-Zu tucked under the island bench, are perfect for breakfast on the go.

Beachy sandstone, lovely light and the magnetic blue of an infinity pool are all part of the rich tapestry making up the beautiful northern beaches home of Michelle and her husband, Greg. On a late summer Sydney day, it’s a heady mix – one that captured the attention of the couple back in 2014. They were on the lookout for a home to suit their busy family, which includes daughter Teagan, 17, and sons Kye, 15, and Ashton, eight. “We were in awe,” recalls Michelle (pictured opposite) of their first sighting of the renovated home. While the home’s relaxed vibe stole her heart, its already established good looks were a plus for her husband. “By the second viewing, Greg was convinced we had to buy it,” says Michelle. “To his relief there was nothing that needed to be done and we could see that with our own belongings, we could make it our own.”

The home had all the hallmarks of a respectful renovation; designed by its previous owner, architect Megan McGlinchey, it comprises three thoughtfully connected pavilions. All elements were considered in the rebuild of the original ‘40s cottage: the north-west aspect ensures the wings receive indirect sunshine all day long and the high ceilings and glass facade mean most rooms make a connection to the outside and the stunning views beyond. “The clever layout works so well for our family,” says Michelle.

Two wings either side of a lofty double entrance hall wrap around an outdoor entertaining area, where a sparkling infinity pool entices. Within one wing, the light and airy open-plan living space combines an informal dining, kitchen and sitting area. Across the hall in the other pavilion, a striking sandstone fireplace with wood storage on either side keeps the space visually open while creating a formal dining and living zone. Also on this level is Teagan’s bedroom, a beautifully fitted out laundry and a large family room and office, “which our boys love!” says Michelle. Its position is also quite handy for their mother. “I can actually keep an eye on them from the kitchen,” she says with a laugh. >

DINING AREA

A much-used informal dining area sits adjacent to the kitchen, with glass sliding doors allowing a view to the outdoors. A Thonet ‘1131’ extendable dining table from Anibou and Kristalia ‘Elephant’ dining chairs from Fanuli are a chic fit for the space and were bought from the previous owner,

architect Megan McGlinchey. “They had a wonderful sense of style, and their furniture seemed to belong in the spaces,” says Michelle. The mum-of-three found the ‘Chai Leaf’ original artwork by Thai artist Yuwana Poonwattanawit while sourcing for her homewares shop. “It gives the space a pop of colour,” she says. >



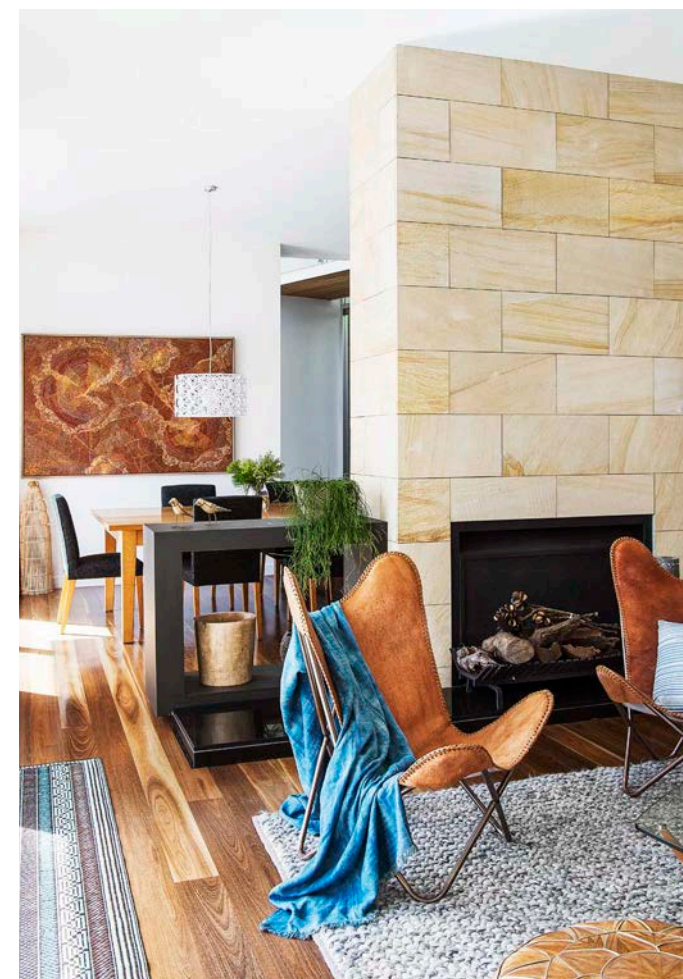
RUG
‘Belgian Domino’
wool and sisal rug,
\$1500/2.4m x 3.3m,
The Natural
Floorcovering Centre.

LIVING ROOM

"This is a really peaceful and quiet place for Greg and I to relax, as it overlooks the pool and there's no TV," says Michelle. The earthy tones of the pair of 'Antique Owl' paintings by Alissa Wright dictated the colour palette for this room (below & opposite page, bottom right). Michelle sourced two vintage goat hide 'Butterfly' chairs – the couple's favourite pieces – along with the leather Sokoto ottoman

from her store Seaside Home & Gift. Michelle also chose a textured 'Knoll' rug by Tribe Home and cushions from Papaya to soften the space. The couple splashed out on what Michelle describes as the "extremely comfortable" Fanuli 'Frankie Deep' sofa in Sabi Marle. A sculptural oak coffee table with a glass top (for similar, try West Elm's 'Spindle' table) teams well with the blackbutt floors from Barrenjoey Timbers.

PAINT
Wash & Wear
Barrier Technology
in White On White,
\$71.90/4L, Dulux.

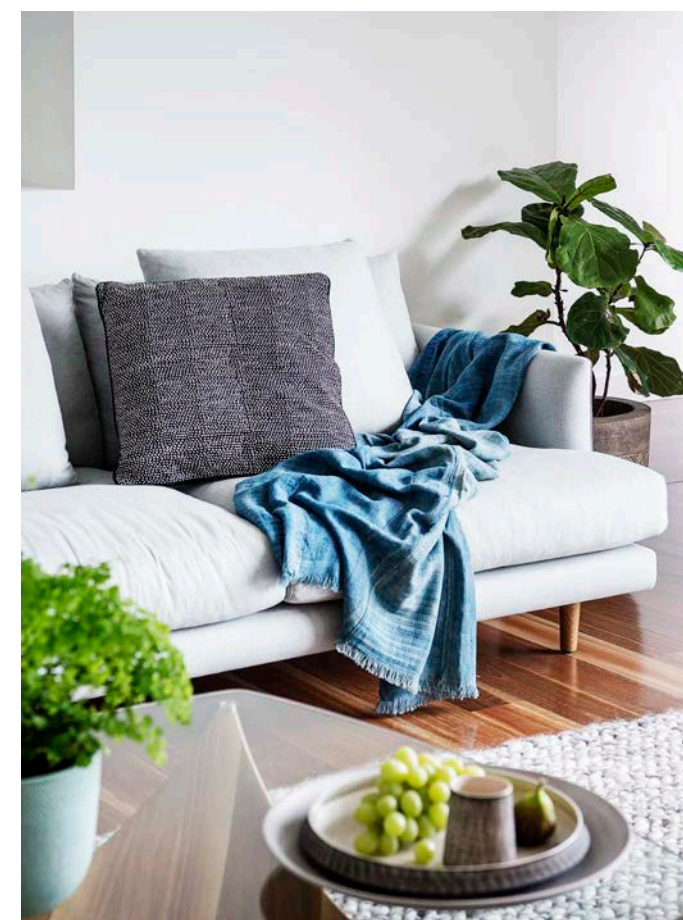


"I LOVE *decorating* WITH NATURAL FIBRES" ~ MICHELLE

< On the upper level are Ashton and Kye's bedrooms, with an interconnecting bathroom, and across a bridge link over the entrance hall, is Michelle and Greg's bedroom.

Michelle, who recently sold her homewares store Seaside Home & Gift in Seaford, thoroughly enjoyed the task of sourcing unique furniture and pieces to make the home her family's own. "My style is an interesting mix of eclectic pieces with modern appeal," she says. "I like design that's streamlined over fussiness, and quirky individual pieces that are not mass-produced." The result is a warm and welcoming home filled with one-of-a-kind, tactile pieces, from leather Butterfly chairs to woven baskets and chunky knitted rugs. Michelle's decorating style brings a homely feel to the open-plan, contemporary spaces and the combination is a beautiful fit for the family. "Our home ensures that we are all very happy," she says. "We love to spend as much time as we can here, relaxing by the pool or eating outdoors and taking in the views. The sunsets are amazing!"

LIVING ROOM Sandstone stars in the living area (top left), wrapping around a fireplace that divides the living and dining areas, and warms the house in the cooler months. "It's so comfy and cosy during winter," says Michelle. **FORMAL DINING** In the more formal dining area (top right), high ceilings and vast wall spaces required artwork that makes a statement: an eye-catching acrylic on linen by Sarrita King purchased from Kate Owen Gallery fits the bill beautifully. A delicate 'Lace' pendant light by Bernabei Freeman creates an intimate mood at the 12-seater Tasmanian Oak dining table, which was bought from the previous owners. Dining chairs upholstered in black linen (for similar, try 'Espan' dining chairs from Brose) add sophistication to dinner parties, while handmade fish traps from Made In Mada and a wooden bird by Marmoset Found continue the home's earthy feel. >



(THIS PAGE & OPPOSITE) POMPOM WRAP SPIDER & LILY, THROW FOND INDUSTRIES



MAIN BEDROOM

In Greg and Michelle's retreat, a wall painted in Dulux Namadji evokes a cocooning vibe. Embroidered prints in lime-washed frames, created by Michelle, hang above their Fanuli bed, which has been layered with natural textiles, including a Sheridan 'Abbotson' linen bed cover in Flax, a Sally Campbell 'Ultramarine' throw,

a rust-coloured Shibori cushion (try Pillows By Elissa on Etsy), a block printed Walter G cushion and a Francalia green stone-washed linen cushion. Black 'Pratella' pendant lights from Best Buy Lighting are ideal for reading. On the adjoining wall (opposite, top left), an organic 'Laguna' woven wall hanging by Marmoset Found adds a textural touch.



**"I LIKE TO
freshen
THE DECOR
FROM SEASON
TO SEASON
WITH textiles"**
~ MICHELLE

ENSUITE
The couple's spacious ensuite (top left, right & above) is door-less but still allows for privacy thanks to a separate toilet and a freestanding tiled blade wall for the shower. The chic design of the deep Kaldewei freestanding bath from Reece adds hotel style to the ensuite, along with Turkish towels and Breezway louvres that flood the bathroom with natural light. Vitrified porcelain floor tiles create a neutral base, while the floating True Grain Casuarina bathroom cabinets echo those

in the kitchen. Above the cabinets, Caesarstone benchtops in 'Espresso' create a dramatic contrast with Argent 'Bette Art' white countertop basins.
ASHTON'S ROOM
Michelle and Greg recently bought Ashton, eight (pictured left), his own 'Stationers' trestle desk and 'Phoenix' office chair, both from Freedom. "He considers his desk pretty special," says Michelle. She has continued the indigo tones from the rest of the house in his room, with paisley bedlinen and blue textiles. >



WE LOVE... stunning sandstone

No beach house would be complete without coastal inspired materials, and the beautiful sandstone cladding throughout Michelle and Greg's home is a subtle reference to its seaside location. 'Teakwood' 20mm sandstone tiles, \$55/sqm, from Exclusive Tiles in Brookvale, (02) 9905 1876, exclusivetiles.com.au.



PAVERS
Granite 60cm x 60cm pavers in 'Regent Grey', from \$66/sqm, Cinajus.

SOURCE BOOK

INSIDE STORY MICHELLE & GREG'S HOME

Who lives here?

Michelle, former homewares store owner, her husband, Greg, a corporate executive, their daughter, Teagan, 17 (pictured opposite), and sons, Kye, 15, and Ashton, eight.

What is your decorating philosophy?

Michelle: "I believe if you truly love something it will find its place in the home. Everything I've collected over the years has a special place"

Best decorating tip?

"When decorating a contemporary home, keep it simple."

What design element do you love the most?

Michelle: "The sandstone throughout the house."

Greg: "We also love the high quality of the details and finishes."



LAUNDRY

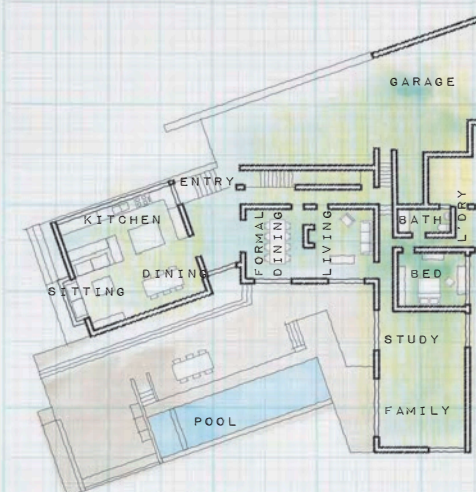
Sandstone tiled walls add glamour to the laundry (above), where roomy white cupboards topped with Caesarstone benchtops in Ice Snow are a luxe match for a Miele washer and dryer.

OUTDOOR NOOK

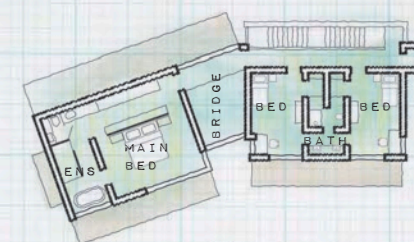
Beside the pool sits another area custom-made for lounging (top left). The built-in bench seat was made by Immaculate Carpentry, with the retaining wall behind it painted in Dulux Forest Black.

PLANS

GROUND FLOOR



FIRST FLOOR



CONTACTS

Architect

Megan McGlinchey Architect,
0425 262 745.

Joinery

Timberline Joinery,
(02) 9316 7482,
timberlinejoinery.com.au.